

50



Aquila 50 Yacht Power Catamaran Specifications

Length overall	15.99 M / 52' 6"
Beam overall	7.76 M / 25' 6"
Height above waterline w/hard top	5.99 M / 19' 8"
Draft with sacrificial keel installed	1.26 M / 4' 2"
Light displacement	23,013 KG / 50,735 LB
Fully loaded displacement	32,281 / 71,167 LB
Sleeps (up to)	10+
Max. passengers	30
Cabins	3 / 4
Heads with separate showers	3 / 4
Utility cabin	1 (option to convert to bunk beds)

Tankage

Fuel tank (total)	1,964 L / 518 GAL
Optional additional fuel tanks (total)	880 L / 232 GAL
Water tank (total)	800 L / 212 GAL
Holding tank (total)	250 L / 60 GAL

CE Certification

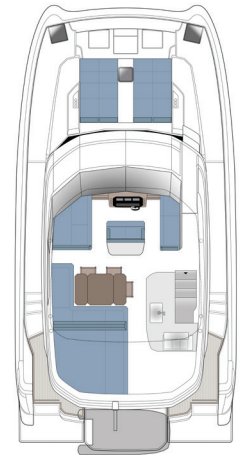
A (ocean) – 12 PAX
 B (offshore) - 12 PAX
 C (coastal) - 20 PAX
 D (inland) - 29 PAX

Propulsion

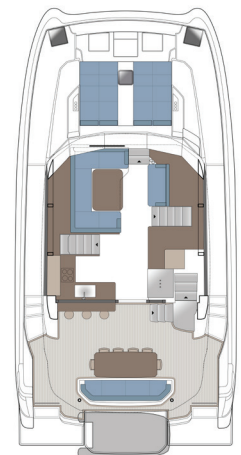
Standard	2x D6 380 HP VOLVO PENTA INBOARD-DIRECT DRIVE
Optional	2x D6 480 HP VOLVO PENTA INBOARD-DIRECT DRIVE
Optional	2x YANMAR 550 HP

Construction

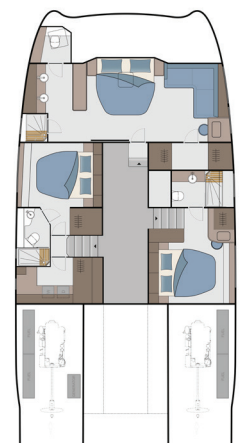
- Resin infused vinylester throughout the hull and deck
- Resin infused vinylester throughout the bulkhead and reinforcing (no plywood in structural components or below waterline)
- Core materials (PVC) vary in density dependent on loads
- Water tight bulkheads fore and aft (NPG)
- Bulbous bows separately molded and attached to each bow; breakaway safety
- Windows in hull and deck – tempered glass meeting ISO standards



STANDARD FLYBRIDGE



STANDARD MAIN DECK



STANDARD 3-CABIN,
+UTILITY ROOM

 **AQUILA**
 aquilaboats.com

All specifications and options are subject to change by Sino Eagle Yachts at their sole discretion. Performance is purely indicative and not a contractual commitment. Performance is subject to many variances outside the control of Sino Eagle Yachts. Specifications and graphics in this brochure are non-binding and customer must enter into contractual agreement with the Dealer or Agent of Record.

Features

- An exceptional performing and seaworthy hull shape providing first in class stability and comfort
- Expansive outdoor living and entertaining spaces along with luxurious interior styling and amenities
- Plenty of sun coverage via fiberglass hardtop with 316L polished stainless steel supports on flybridge
- Direct bow access from starboard steps leading from flybridge down to bow area
- FUSION audio system with Bluetooth and eight (8) Fusion speakers and 4 Zone Sound Control
- C-Zone digital switching system for DC powered components
- Optional interior helm station for added comfort during inclement weather
- For overnighting, premium comforts are provided by one (1) full beam master cabin with ensuite head and two (2) guest cabins with ensuite heads
- Option forepeak cabin (starboard bow) available with all cabin configurations

Propulsion

- Standard Engine: 2x D6 380HP Volvo Penta Inboard - Direct Drive

Interior Layout

- Full beam single level master suite including full size his/her walk in closet, large settee area and vanity, separated head and shower area with two (2) sinks
- Full beam owners cabin with King size memory foam bed, ensuite head, electric flush freshwater toilet, walk in closet and sofa (standard) or work desk (optional)
- Two (2) guest cabins with Queen size beds, ensuite heads with electric flush freshwater toilet
- Utility cabin with storage and space for optional washer/dryer – option available to convert to double bunk
- Large salon area with comfortable U-Shaped seating and sofa area to starboard side
- Large galley area with common household amenities and large tilt up window for bar area

Hull and Deck Features

- Eight (8) opening deck hatches carefully positioned to enhance ventilation in cabins
- Thirteen (13) opening portlights installed in hull side windows and forward salon windows
- Deck railings in 316L stainless steel
- Ergonomic transom steps for easy boarding and comfortable lounging off stern
- PVC rub rail with 316L stainless steel insert offering all round protection
- Comfortable and protected bow seats integrated into deck railing (2)
- Foredeck seating with comfortable cushions
- Foredeck sun pad area with integrated cushions
- Flush mounted size 60 hatches allowing access to port and starboard bow lockers (2)
- Deck hatches allowing access to anchor chain area and windlass

- Deck fill plates in 316L stainless steel: water (2); fuel (2); waste (3)
- Stainless steel mooring cleats thru bolted (10 total)
- Well placed ergonomic handrails in 316L stainless steel ensuring secure movement onboard
- Forward access steps from flybridge to bow with 316L polished stainless steel support and safety rail
- LED navigation lights, running lights, and anchoring light
- Engine ventilation intakes with FRP cowling cover
- Custom stainless steel retractable swim ladder with teak steps located in large aft deck hatch
- Aft cockpit, flybridge, and side decks all self draining
- Equipped with a deck hatch for main engine maintenance and an additional small hatch for easy daily maintenance
- Aft cockpit with heavy duty stainless steel sliding door with flip up bar counter window
- Fixed aft cockpit table with stainless steel supports comfortably seating for eight (8)
- Aft cockpit settee seating with storage underneath
- LED deck courtesy lights located at transom, cockpit, and flybridge
- Windows, bonded in tempered glass – hull side and super structure
- Salon and master cabin forward facing windows, bonded in tempered glass

Aft Deck and Cockpit

- Sliding stainless steel glass door, lockable with threshold – entrance to salon
- Bar area with three (3) 316L stainless steel bar stools and large hinged window to open up to galley area
- Engine room access from deck hatches
- LED flood lights to light up aft transom and dinghy lift area (2)
- Marine waterproof 6.5" Fusion speakers (2)
- Structural polished stainless steel supports (2)
- Handrails, 316L stainless steel
- LED courtesy lighting
- LED overhead lighting
- Seating across width of cockpit area
- Stainless rotating safety doors to port and starboard side (stainless steel and acrylic)
- Self draining cockpit area
- Slide out stainless steel swim ladder with teak steps
- LED courtesy lights on transom steps
- Large FRP storage lockers located on port and starboard side
- Expansive fixed aft FRP platform extending from port to starboard

Flybridge

- Expansive FRP hardtop with stainless support structure
- Forward flybridge access via forward starboard bow steps with built in stainless steel handrail for safety
- Spacious comfortable convertible helm seat for two (2) people with upholstered seat
- Comfortable forward facing seat on port and starboard side adjacent to helm station

- Manual opening overhead hatches in hardtop allowing airflow to captain (2)
- Volvo Penta 7" engine Data Color Display at flybridge helm
- Volvo Penta dual engine throttle control
- Electric fly by wire steering system
- Marine waterproof 6.5" Fusion speakers (4)
- Main access from aft cockpit molded FRP steps
- Handrails conveniently located all around flybridge for secure movement
- Stainless steel framed Perspex windshield
- Compass at helm station
- Variable position stainless steel Aquila branded steering wheel
- L-Shaped settee area with fixed table and fold down extensions—comfortably seating eight (8) people
- Upholstered aft flybridge sun lounge cushions and backrests
- Wet bar located aft starboard deck area incorporating Corian work surface, sink with hot and cold faucet (optional location for full size electric BBQ)
- Large storage area under wet bar with two (2) access doors (optional location for fridge and ice maker)
- FRP storage area behind the helm station
- Life jacket and safety gear storage area under L-Shaped settee seating area
- Designated life raft storage under sun lounge cushion
- Cup holders located in various areas around flybridge
- LED overhead mood lighting in hardtop ceiling

Engine Room

- Automatic fire suppression heat activated system with alarm monitors at helm station
- Diesel fuel system with water separation filters
- Dedicated aluminum fuel tanks for each engine with safety shut off valves and level monitors
- Engine room insulation – flame retardant polyurethane foam covered metalized polyester film
- LED lighting (2)
- Fly by wire steering
- Automatic bilge pump in each engine room with warning light at helm and nav station
- Excellent all round engine and systems access for ease of maintenance
- 982L/259 gal fuel tanks in each engine room—total of 1,964L/518 gal

Underwater Gear

- Engine A-Drive transmission for compact efficiency
- Propeller tunnels for reduced draft and maximum efficiency
- Bronze propellers
- Machined stainless steel propeller shafts with rope cutter installed on each shaft
- Rudders and tiller arm in 316L stainless steel with FRP tube
- Shut off valves on all salt water intakes in engine rooms
- Sea water strainers with transparent lid
- Watertight self aligning dripless shaft seal with 316L stainless steel housing

- Extended bronze P-Bracket for maximum propeller protection
- Sacrificial skeg forward of drive for added running gear protection

Mooring System

- Electric anchor windlass (24v-1700w) with wired control
- Stainless steel anchor roller
- Primary anchor – 70 lbs galvanized
- Galvanized anchor chain (3/8" with 150 ft length) and bridle system
- Fiberglass deck hatch to self draining locker
- Antifouling paint (black) applied to underside of hull surface up to waterline (does not include running gear)
- Mooring kit: includes six (6) fenders, six (6) mooring lines

Salon

- Laminate finished cabinetry with solid wood capping throughout with accented wall and ceiling coverings
- Shatter-proof windows with external overhangs offers excellent visibility and reduce sunlight
- Flush mount 7.7" 200w overhead speakers in ceiling panels (2)
- Tempered glass, stainless steel sliding door providing access to cockpit
- Blinds covering port and starboard side windows
- Upholstered panel ceilings with decorative wood trim and LED accent lighting
- Comfortable built in open couch seating to starboard for two (2) persons
- Settee seating U-Shape around salon table comfortably seats eight (8) people
- Expandable salon table mounted on fixed stainless steel pedestal
- Cushions covered with soft easy to clean upholstery
- Port light hatches installed on forward facing windows providing additional ventilation (3)
- Designated area for TV and soundbar to be installed on salon bulkhead
- Overhead LED ceiling lights, LED mood lighting, and LED courtesy lighting
- LED courtesy floor lighting
- Decorative LED wall sconces (2)
- Electrical outlets located throughout area
- Floor access hatch to main house batteries and charging/inverter systems
- Synthetic wear resistant flooring offering maintenance free natural wood look
- Stair access to starboard and port side cabins
- Central walkway access to forward master cabin
- 316L stainless steel handrail in salon and galley wrapped in leather

Galley

- Induction electrical cooktop (4 burner)
- Refrigerator/freezer—full sized French door refrigerator with slide out freezer below
- All countertops with Corian natural stone finish
- Dedicated microwave storage location with outlet

- Large single stainless steel sink with Corian cover and faucet
- Shatter-proof windows with external overhangs offers excellent visibility and reduce sunlight
- Flush mount 7.7" 200w overhead speakers in ceiling panels (2)
- Built in slide out garbage bin under sink
- Hinged stainless steel bar window with flip down Corian countertop
- Storage cupboards and drawers offering ample storage for all galley accessories
- Overhead LED ceiling lights as well as mood lighting
- Electrical outlets located throughout area
- Synthetic wear resistant flooring offering maintenance free natural wood look

Owner's Cabin — Full Beam

- Laminate finished cabinetry with solid wood capping throughout with accented wall and ceiling coverings
- Private access door to cabin for privacy
- A/C vents with aircon display/controller
- Power sockets with single USB outlet located next to bed (2)
- Opening ventilation hatches in ceiling with concealed blinds (2)
- Bedside cabinets with pull out drawers
- LED reading lights to port and starboard of bed above bedside cabinets
- Designated area for flat screen TV and sound bar
- Port and starboard deck and hull side windows with blinds
- Expansive side facing windows offering 180 degree view to inside
- Additional storage under cabin mattress
- Memory foam mattresses
- Cabin Mattress Size: King: L =80" (204cm) x W=77" (195cm)
- Dressing and desk area to starboard side including: (only available for 3 and 4 cabins version)
 - Built in vanity with hinged top with mirror and light inside
 - Storage cabinets under countertop
 - Hull side window with blinds
 - Power outlets
 - Leisure settee on starboard side
 - Walk in closet with storage shelves and clothes hanging area
 - Storage cabinets on inboard side area
 - Full length mirror with upholstered frame
- Bathroom area to port side including:
 - Hull side window with blinds
 - Bathroom vanity with two (2) sinks and faucets
 - GFCI protected outlets at sinks (2)
 - Toothbrush and towel holders
 - Corian countertops
 - Overhead cabinetry for storage
 - Storage cabinets under countertop
 - Walk in fresh water electric flushing toilet with privacy door
 - Storage cabinet on the port side of the head

- Opening ventilation hatches in head ceiling with concealed blinds

VIP Cabins—Port and Starboard Side

- Laminate finished cabinetry with solid wood capping throughout with accented wall and ceiling coverings
- Private access door to cabin for privacy
- A/C vents with aircon display/controller in each cabin
- Power sockets with single USB outlet located next to bed (2)
- Bedside cabinets
- Clothes hanger closet
- Large hull side window with blinds
- Full length mirror with upholstered frame
- Overhead LED ceiling lights as well as mood lighting
- LED reading lights to port and starboard of bed above bedside cabinets
- Additional storage under cabin mattress
- Memory foam mattresses
- Cabin Mattress Size: Queen: L =79" (200cm) x W=60" (152cm)
- Bathroom area including:
 - Fresh water electric flushing toilet
 - Walk in shower with separation hinged door
 - Single vanity with sink and faucet
 - GFCI protected outlet
 - Toothbrush and towel holder
 - Corian countertops
 - Synthetic wear resistant flooring offering maintenance free natural wood look
 - Full length mirror with upholstered frame

Utility Cabin and Storage

- Laminate finished cabinetry with solid wood capping throughout with accented wall and ceiling coverings
- Private access door to cabin for privacy
- A/C vents in utility cabin
- Hull side window with blinds
- Overhead LED ceiling lights
- Large Corian cover
- Storage cabinets under countertop
- Hanging cabinet for storage

Navigation Area

- Upholstered navigation work surface for charts and books with locker
- C-Zone 7" digital switching control screen with transfer switches for all electrical systems
- Dedicated service panel for optional generator, water maker, and aircon display/control panels
- Multi zone entertainment system master unit offering 4 zone control
- Light switch panel controlling all salon, galley, and aft cockpit lighting
- Remote battery switch controls for all onboard batteries

Water and Bilge System

- Fresh water pressure pump with accumulator tank offering equal water pressure throughout
- Two (2) 80L/21 gal each water heaters

- Two (2) 400 L/ 106 US gal connected water tanks
- Transom pull out shower mixer (hot/cold)
- Water tank levels visible through C-Zone system
- Four (4) automatic bilge pumps

Waste System

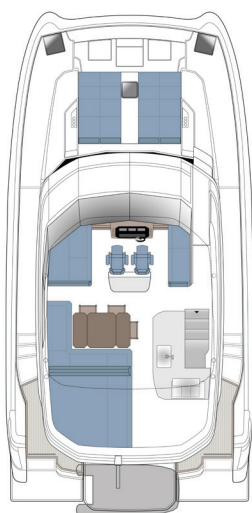
- Grey water from showers and sinks collected in sealed sump boxes with auto discharge overboard
- Two (2) 80 L/ 21 US gal black water tanks with sea discharge pumps and dockside pump out
- Black water tank levels visible through C-Zone system

Electrical

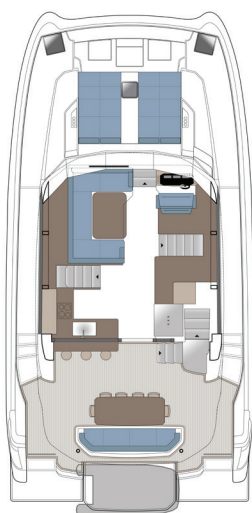
- C-Zone DC digital switching system
- Main house battery charger/inverter: MasterVolt Mass Combi Pro 24/3500-100

- Main engine battery chargers: MasterVolt EasyCharge 6A (2)
- Master control panel for 24v and shore power service
- Remoter battery master switches at panel
- Shore side electrical system
- AC power supplied by two (2) 50 Amp 125/250v shore power cables
- Galvanic isolator protector system
- Shore power overcurrent protection breakers
- House batteries = four (4) 200 A/h AGM
- Engine start batteries = two (2) 180 A/h AGM

OPTIONAL LAYOUTS



FLYBRIDGE WITH
OPTIONAL CAPTAINS
CHAIRS



MAIN DECK WITH
OPTIONAL INTERIOR HELM



3-CABIN WITH OPTIONAL
OWNERS SUITE DESK



4-CABIN

- 3-CABIN AND 4-CABIN FLOOR PLANS INCLUDE OPTIONAL:
- FOREPEAK SKIPPER CABIN (FORWARD STARBOARD HULL)
 - OVER/UNDER BUNK BEDS IN LIEU OF LAUNDRY ROOM