

36

SPORT



Construction

- Resin infused hull, deck, and bulkhead construction creating high strength and stiffness
- Solid FRP lamination at hull centerlines including all through hulls
- Vinyl ester resin with excellent corrosive and water resistant properties
- NPG gelcoat with superior UV resistance
- All main FRP components resin infused construction including bulkheads
- Windows in hull and deck high quality acrylic meeting ISO standards

Interior Layout

- Two (2) cabins with private en-suite showers and fresh water electric toilets
- Private lockable companionway hatch to each cabin

STANDARD MAIN DECK



STANDARD CABIN



SPECIFICATIONS

LENGTH: 10.96 M • 36' 0"

OVERALL, INCLUDING SWIM PLATFORM BUT EXCLUDING ANCHOR ROLLER.

BEAM: 4.45 M • 14' 7"

HEIGHT: 3.05 M • 10' 0"

ABOVE WATERLINE WITH HARDTOP (EXCLUDING ELECTRONICS)

DRAFT: 60 CM • 2' 0"

WITH OUTBOARD ENGINES UP.

LIGHT DISPLACEMENT:

6,608 KG • 14,568 LB

OPTIONAL FULLY ENCLOSED VERSION ADD 400 KG / 880 LB.

LOADED DISPLACEMENT:

9,785 KG • 21,572 LB

OPTIONAL FULLY ENCLOSED VERSION ADD 400 KG / 880 LB.



ACCOMMODATIONS

SLEEPS UP TO: 4

MAXIMUM PASSENGERS: 26 **22**

CABINS: 2

HEADS WITH SHOWERS: 2



TANKAGE

FUEL: 1250 L • 330 GAL

WATER: 200 L • 52 GAL

HOLDING: 80 L • 21 GAL



PROPULSION

STANDARD:

2x White Mercury Verado V8 300 HP

WITH JOYSTICK PILOTING CONTROL AND 4" VESSELVIEW DISPLAY.

OPTIONAL:

2x White Mercury Verado V10 400 HP

WITH JOYSTICK PILOTING CONTROL AND 4" VESSELVIEW DISPLAY.



CE CERTIFICATION

B (OFFSHORE): 8

C (COASTAL): 18

D (INLAND): 26

All specifications and options are subject to change by Sino Eagle Yachts at their sole discretion. Performance is purely indicative and not a contractual commitment. Performance is subject to many variances outside the control of Sino Eagle Yachts. Specifications and graphics in this brochure are non-binding and customer must enter into contractual agreement with the Dealer or Agent of Record. Actual color samples may vary slightly from digital representation.

OUT THERE STARTS HERE™

aquilaboats.com

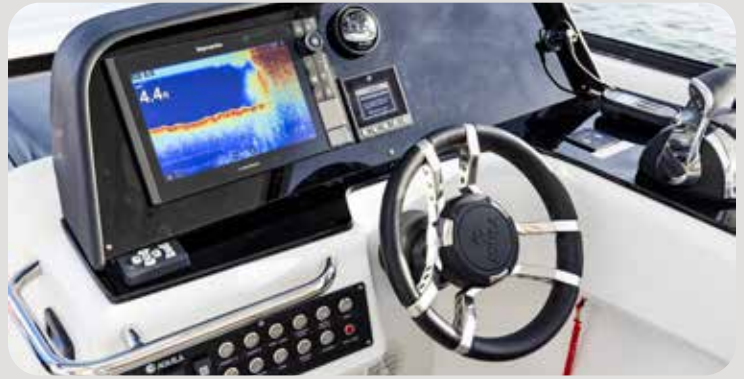
Updated 5.8.25

Deck Layout

- Forward cockpit seating that comfortably seats eight (8), converts to two (2) large sunbeds
- Helm station to starboard with comfortable seating for two (2) passenger seating to port in line with comfortable helm station seating for two (2)
- Galley to starboard with Corian surface, 85 L/3.0 c ft fridge/freezer, storage, wash basin and AC power sockets
- Settee seating with folding table to port
- Insulated cooler and drain built into seating port
- Convertible seating aft that converts to sunbed, facing forwards or aft
- Seating at aft deck on port and starboard sides which face forward
- Entire deck area self draining aft with additional scuppers forward
- Side boarding doors port and starboard with heavy duty hardware
- Stainless steel gate to large aft swim platform
- Opening in windscreen and lower door for easy access to forward seating
- Anchor locker hatch with separate chain locker hatch
- Storage lockers forward in each hull with access from under forward seats
- Storage locker under floor in forward seating area
- Storage lockers under all aft seating
- Large aft hatches for access to equipment lockers
- Large aft hatch in swim platform with custom stainless steel retractable swim ladder with teak steps
- Easy lift gas shocks for all large hatches
- Integrated targa arch
- Hard top with stainless steel supports and two (2) opening deck hatches
- All exterior upholstery designed by leading international company
- All upper deck furniture in FRP elevated off the floor for ease of cleaning and drainage

Hull & Deck Equipment

- Stainless steel railings and handholds in AIS 316L
- Custom built PVC rub rail with 316L stainless steel insert offering all round protection
- Windscreen in tempered glass with custom aluminum frame
- Variable speed windscreen wiper with control mounted at helm
- Anchor platform and roller in 316L stainless steel
- Electric windlass (12v-1000W) with handheld control
- Polished stainless steel 35 lb anchor with rope (200 ft), chain (15 ft), and bridle attachment rigging
- 10x pop up mooring cleats in solid 316L polished stainless steel and thru bolted
- Deck fill plates in 316L stainless steel; water; fuel (2); waste (2)
- Emergency ladder
- LED navigation lights—port, starboard, anchor and running light



- Port and starboard Integrated side boarding gate with robust SS hardware
- Four (4) LED drink holders for forward cockpit
- Ten (10) drink holders between helm and aft deck area
- Two (2) 30 amp shore power inlet supply plugs
- LED overhead lights in hardtop for settee and galley
- Multi zone sound system with Fusion head unit (Bluetooth) with six (6) Fusion 6" speakers
- Two (2) fishing rod holders on port and starboard side aft quarter

Helm

- Adjustable seat comfortably sitting two passengers with individual flip-up bolsters
- Electronic engine double lever throttle and gearshift control
- Mercury Joystick Piloting control
- Mercury VesselView 4" display with Active Trim Control
- Variable position steering wheel with Aquila stainless steel steering wheel
- Magnetic compass
- Automatic Halon fire alarm for each fuel tank area
- Mercury Verado power assist steering
- Two (2) cup holders
- Switch panel for common items for ease of use
- Horn control
- USB and 12v outlet at helm and port side pilot seat
- AC power sockets under seating
- Stainless steel foot rest

Cabins

- V double berth in each cabin
- Memory foam mattresses
- Wood furniture in plywood with light wood composite laminate and matching hard wood trim
- Synthetic wear resistant flooring offering maintenance free natural look
- Side and ceiling panels upholstered
- Storage shelves, lockers and drawers
- Electric variable speed fan in each cabin
- Designated microwave area with AC outlet
- Blinds for all windows and hatches
- LED overhead lights
- LED reading lights
- AC power sockets
- Carbon monoxide alarm in each cabin

- Deck hatch above each bed for ventilation
- Large hull windows bringing in a lot of light

Heads

- FRP module with upholstered sides and storage lockers in composite laminate surface
- Basin surface in Corian
- Ceiling and inboard sides in low maintenance FRP finish
- Teak grate in shower area
- Fresh water mixer faucet with pull out shower head
- Mirror
- Large window with pull down blinds
- Shower curtain mounted on track
- Electric fresh water flush toilet with macerator, holding tank located behind air tight bulkhead
- Stainless steel towel hanger above toilet
- Large aft storage locker combined with hanging locker
- Storage lockers on inboard side
- LED overhead lights
- Opening hull port light



Electrical System

- Master control panel for 12v and shore power service at starboard companion way hatch
- Helm station LED push button electrical panel
- Remote battery master switches at panel
- Engine parallel control remote switch
- Two (2) dedicated engine start batteries each located in aft locker
- Two (2) AGM 200 Ah house batteries
- Battery trays with mounts
- Inverter/battery charger 120a/3000VA
- Volt meter and amp meter
- Galvanic isolator system
- Reverse polarity indicator
- Multi zone entertainment system master unit at helm station
- Two (2) 30 amp shore power supply plugs

Fuel System

- Fully independent heavy gauge aluminum tanks totaling 1250 L/330 gal with gauge at helm station
- Manual fuel shut off valves

- Fuel tank vents
- Natural ventilation of locker plus forced air ventilation controlled from dash board
- Water and air tight bulkhead separating cabin area
- Mercury fuel filters
- Automatic fire suppression heat activated system with alarm monitors at helm station for fuel tank area

Water & Bilge System

- 200 L/52 gal fresh water tank
- Automatic 12v fresh water pump
- 40 L/10.5 gal water heater (only operable from shore power and/or optional generator)
- Transom pull out shower mixer
- Faucet – wet bar
- Pullout sprayer in each head
- Four (4) automatic 12v bilge pumps

Grey Water System

- Automatic grey water pump connected to each shower drain for direct overboard discharge

Black Water System

- Two independent 80 L/21 gal tanks located aft of air tight bulkhead
- Deck evacuation or electric direct overboard pump separately controlled

