

ISSN 1326 - 4508

# AB

## Australian Boating



AB May-June 2021 #291  
\$11.95 ea

For copies, CLICK here:  
[www.australianboatmags.com.au](http://www.australianboatmags.com.au)  
Subscriptions: \$45 x 6 issues p.a.

### Heading Downunder:

- ▶ Lagoon 55
- ▶ Aquila 54

### & Heading to FNQ:

- ▶ Trailerboat
- Fishing **The GBR**  
From **Cooktown**



# AB

## Australian Boating

Contents AB May - June 2021 Issue #291



P.78-83

**Alvan's Cooktown Adventure**.....78-83  
Take a break - and enjoy Alvan Paynter's run up to Cooktown, on a fishing trip they'll talk about for years.



P.66-71

**ARKEMA 4 Launched**.....66-71  
The very latest, state-of-the-art high performance composite French multi we're going to hear a lot about.



P.18-25

**2021 Marlay Point Adventure** .....18-25  
Yacht builder David Bradburn trailed his pretty Cygnet 20 down from Lake Macquarie to the Gippsland Lakes to compete in the famous overnight TY event.

**Jeff's Review: Stabicraft 2250 Centre Cab**.....58-63  
Another first class family plate fishing rig.



P.92-95

**Let The Force Be With You**.....92-95  
How awesome is this F21XB Force? Made in Oz, too!

**Superb Aquila 54 Cat Released**.....34-45  
Well, this is a problem - we're gonna have to buy even more Lotto tickets now, to cover the cost of the Aquila 54 the boss wants to order!



**Lagoon 55**

P.26-32



**Aquila 54 Motor Yacht**

P.34-45

# AQUILA 54

**H**aving recently been given the nod as the winner of the international Multipower Category of the respected MultiHull of the Year Award, the new Aquila 54 is the latest derivation of this growing range of extremely well designed and beautifully fitted-out Aquila luxury cruisers.

At a time when many international cruiser manufacturers are 'exploring their options in their future models' this big Aquila cat has almost defiantly stuck to tried and proven powered cat design and fit-out standards, albeit with a 'best of everything'

approach that experienced cat owners will love.

Or to put it another way - it really is the embodiment of every design technique and boatbuilding standard cat owners have experienced and developed since big cats like this were first launched back in the 1990s.

*(Report continues over on page 35)*



For experienced powered cat owners, this is the vital 'money shot' as it shows THE single most important feature of any big cat's basic design - the *height* of the tunnel. That this tunnel is so well clear of the water surface when the boat is off plane is very impressive. We'd also love to see a shot from same angle with the Aquila 54 'up and running' like it is in the main shot, but between the stills (especially the stern view pic on Page 38), the video footage and commentary, it sure looks like they've got this Aquila 54 well and truly wired for comfortable, long range, all-weather cat cruising.





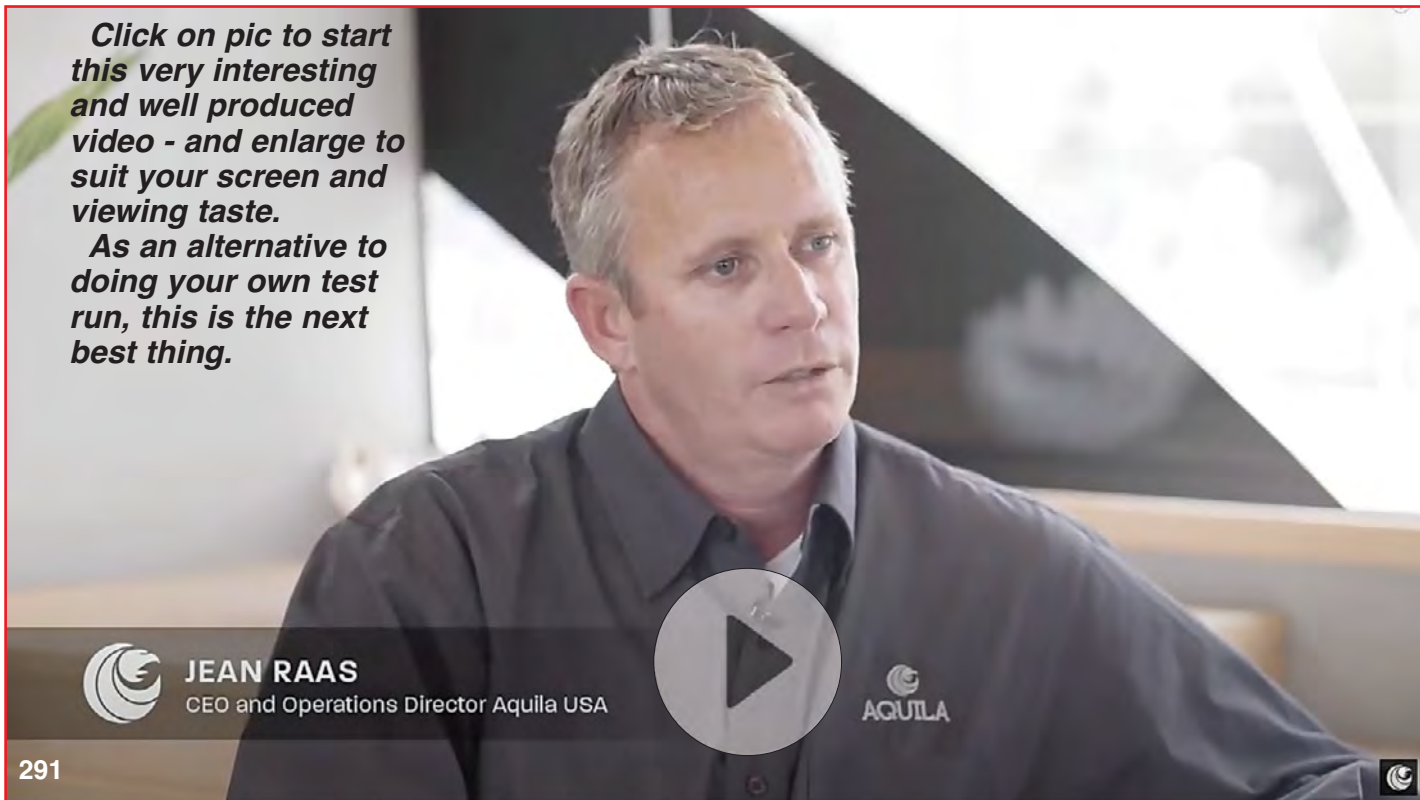
**Above:** The big Aquila 54 'runs' beautifully - as can be seen here and especially in some of the video's 'long shots'. It's also really great to see a boatbuilder (of any hull persuasion) focused on the real world, ocean-cruising speeds of 18-20 knots.

**Below:** Readers with powered cat experience will particularly appreciate this video, as it brings to the fore quite a number of features that make powered cats of this calibre such an interesting proposition - especially for long range, all-weather, go anywhere, cruising.

## Aquila increases its range of luxury power GRP catamarans to 5 models . . .

**Click on pic to start this very interesting and well produced video - and enlarge to suit your screen and viewing taste.**

**As an alternative to doing your own test run, this is the next best thing.**



**JEAN RAAS**

CEO and Operations Director Aquila USA



CLEARWATER, FL (April 28, 2021)

**One of the newest additions to the lineup, the Aquila 54 Yacht Power Catamaran, recently won the Multihull of the Year award!**

Lex Raas, Aquila President, comments, "We're honored to win the Multihull of the Year award during the 54's inaugural year. We've seen a tremendous response from current Aquila owners and our international dealers, so it's no surprise we caught the eye of the industry as well."

With the growing popularity of catamarans worldwide, Multihulls World, Multicoques Magazine, and the International Multihull Show dedicate efforts to highlight the benefits and true joy of owning multi-hulled vessels. The annual election for "Multihull of the Year" awards winners are chosen through an open voting system where boating enthusiasts, readers, and nominees cast their ballots. The Aquila 54 received the award in the Multipower Category.

The Aquila 54 Yacht Power Catamaran embodies the reliable features and construction methods of the hundreds of Aquila yachts and boats cruising the world's

waters. This model enhances onboard luxuries with full-size refrigeration, abundant counter space, signature outdoor serving and entertaining bar, architectural stairs, water maker, washer and dryer, and many more desirable cruising comforts. Layouts include three, four, and five-cabin options and modern "galley-down" configuration plus skipper's quarters.

Lex Raas continues, "The list of standard features aboard the 54 will impress anyone familiar with vessels of this size. Performance, another hallmark of the Aquila brand, will allow for high-speed travel and slower, more efficient, extended cruising ranges. The exceptional approach to hull design employed by the Aquila design team allows identification of the optimum engine package for the vessel while building and exacting lifting, sea keeping, and planing characteristics for the ultimate efficiency in hull design and on-board comfort."

The Aquila 54 is a stylish vessel featuring sweeping lines and a dramatic bow with

*In this video, we join Capt Nick Pavlakis from the huge American Marine Max marine retail organisation for a comprehensive Walk-Thru (including the engine room) of Boat #3.*

**Click on pic to start this very revealing 'Walk-Thru' video - and enlarge to suit your screen and viewing taste.**





**Above:** No doubt this wave-piercer multihull is special - check out the wave-piercer forefoot bulbs, and think about the extra 'lift' they produce - especially important in head seas.

**Below:** A beautiful, classy set-up for the master suite, without any of the 'pinching' effect around the sides of the double berth. The spaciousness here is simply amazing.



wave-piercing bulb technology. (See the special pic here - left) and make sure to watch the world debut presentation video from the Aquila YouTube channel (presented by AB-TV back on page 34) providing a comprehensive and informed look into the award-winning characteristics of the Aquila 54 Yacht Power Catamaran.

### About AQUILA

Recognized globally for its high-quality, advanced composite manufacturing capabilities, Sino Eagle Yachts builds Aquila Power Catamarans in a state-of-the-art facility to exacting standards.

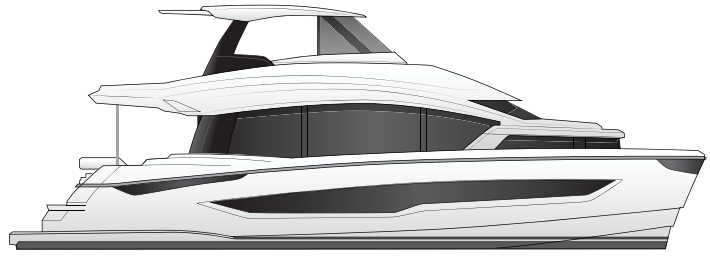
With one of the most talented teams in the industry providing the combined knowledge and extensive experience, Aquila has established an impressive new standard of power catamaran innovation.

Leading the way in the market segment, Aquila continues to pave the way with strong international sales of the award-winning Aquila brand.

Uncompromising design coupled with unmatched industry experience, engineering and manufacturing by world-class builders, make up the Aquila line of true pure-bred power catamarans.

For more information visit [www.aquilaboats.com](http://www.aquilaboats.com) where you will also find links to the principal Australian Aquila distributors and dealers.

**AB**



### Aquila 54Y Specifications

Length overall w/ swim platform (exc. anchor roller)	16.5 M / 54' 2"
Beam overall	7.68 M / 25' 2"
Height above waterline w/ hard top (excluding electrics and electronics)	6.15 M / 20' 2"
Height above waterline w/ hard top (including light and radar mast)	7.43 M / 24' 4"
Draft including propellor (approximate - will vary depending on load)	1.37 M / 4' 6"
Bridge deck clearance (approximate - will vary depending on load)	0.96 M / 3' 2"
Light displacement with D6 Volvo Penta	23,300 KG / 52,300 LBS
Fully loaded displacement with D8 Volvo Penta	30,000 KG / 66,000 LBS

### Tankage

Fuel tank (standard)	2,200 L / 581 GAL
Fuel tank (optional)	720 L / 190 GAL
Water tank (standard)	1,000 L / 238 GAL
Holding tank (total)	340 L / 90 GAL

### CE Certification (internationally recognized)

Cat. A (Ocean)	12 PAX
Cat. B (Offshore)	12 PAX
Cat. C (Coastal)	20 PAX
Cat. D (Inland/Sheltered)	30 PAX

### Accommodation

Cabins	3 / 4 / 5
Heads with separate showers	3 / 4 / 5
Sleeps up to	6+
Maximum Passengers	30





**Left:** Nigh on perfect tender/fishing rig set-up.  
**Above:** Love it - check the height of the tunnel.  
**Below:** Incorporating the walk-around, and walk down and thru "Portuguese" bridge deck. Superb.





**Above:** “Make mine medium rare, please !” as dad gets sorted on the flybridge aft-deck BBQ. This is a nice touch in a family oriented multihill of this calibre that will no doubt be party central

on those long hot summer days with family on friends on the ‘Arbour, over at Rotto or up the Hawkesbury river. Even though she’s a big Cat, the Aquila 54 would still be easily handled alone.



The all-weather, lock-up flybridge is superbly designed for maximum flexibility and efficiency. It has a rear ‘sky-deck’ for the BBQ and entertaining, plus the marvellous walk-around and walk-down-thru ‘Portuguese’ bridge layout - easily the best possible set-up for family crews.

**AB**



**Above:** When you study luxury cruisers like this, it's not hard to see why so many buyers today are opting to buy a cruiser with this level of comfort and convenience - instead of the traditional 'coast house'

of yesteryear which today have vanished into the growing Airbnb hole as investment properties. Here, the family has all the mod cons and comforts in the world, and they can take it anywhere, anytime.





**Above:** Ten out of ten for design and planning here. Putting the galley aft always works best - and using it as a breakfast and cocktail bar is spot on.

**Below:** Dad's right - owning a Aquila 54 cat is definitely cause for celebration. High fives all round are the order of the day as the family sits down together and plan the day's activities. . .

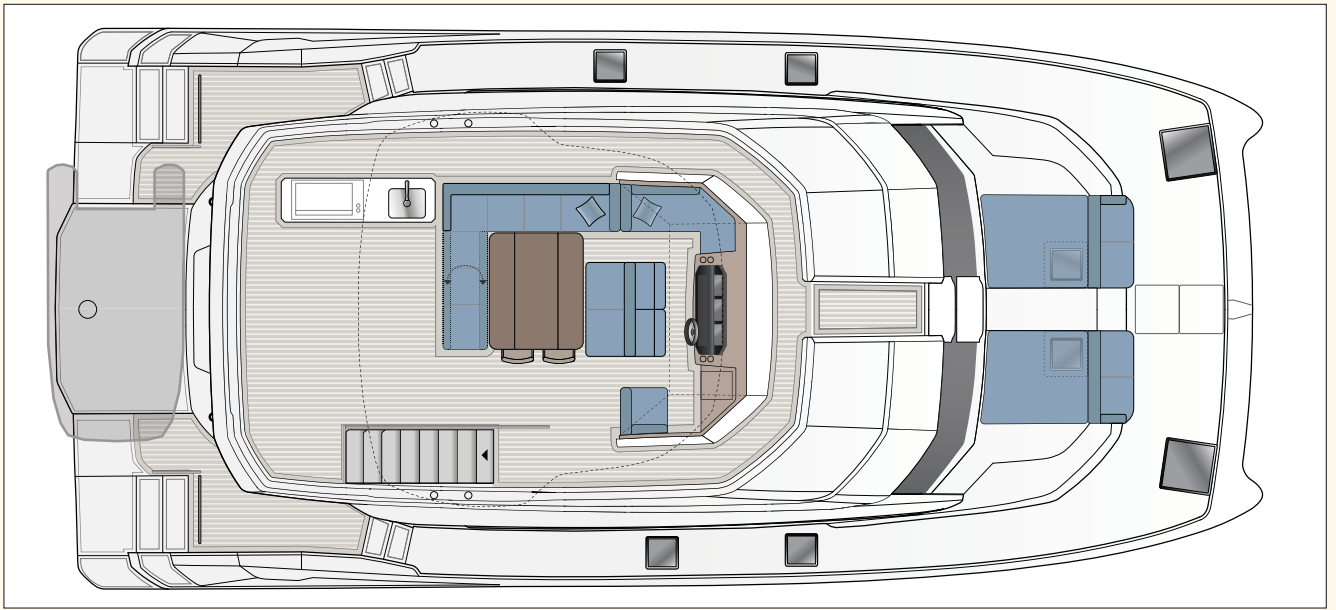




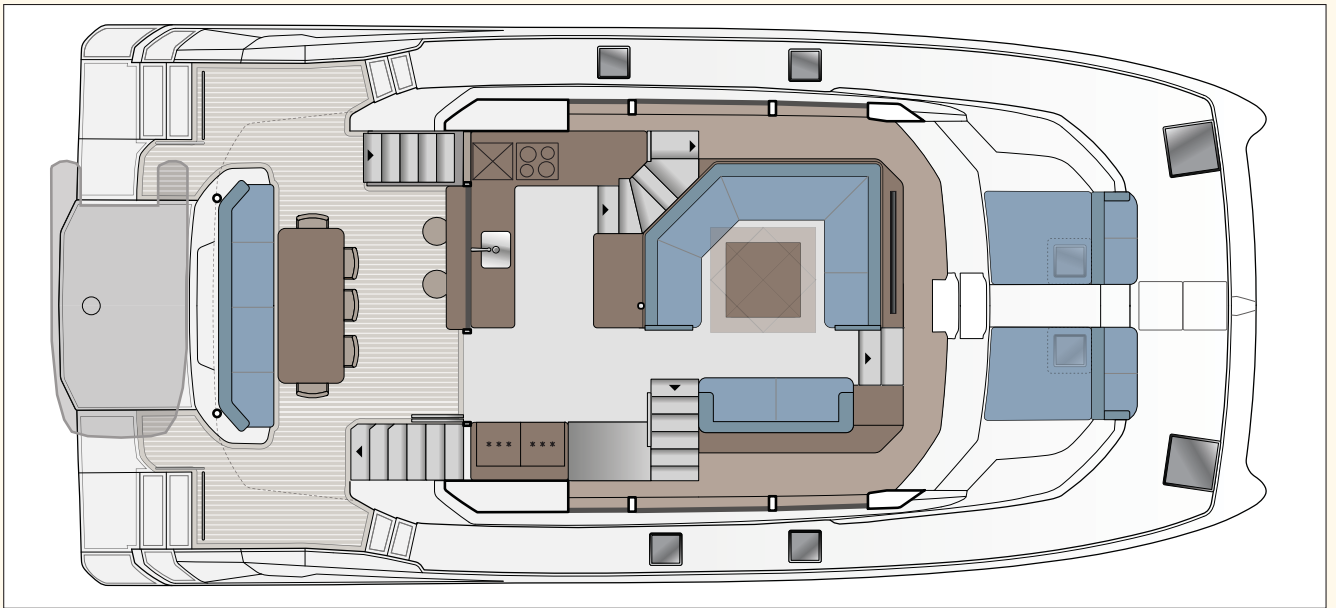
***Above: Gorgeous set-up for anything from very sophisticated, exclusive entertaining, to just a big happy family party with kids and friends all over - whilst Mum and Dad hide behind the . . . bar!***

***Below: Look, this rig has more bathrooms and heads than the Hilton . . . and this is just the standard, 'let's get started' basic layout! But as you can see, the finish is extremely high.***

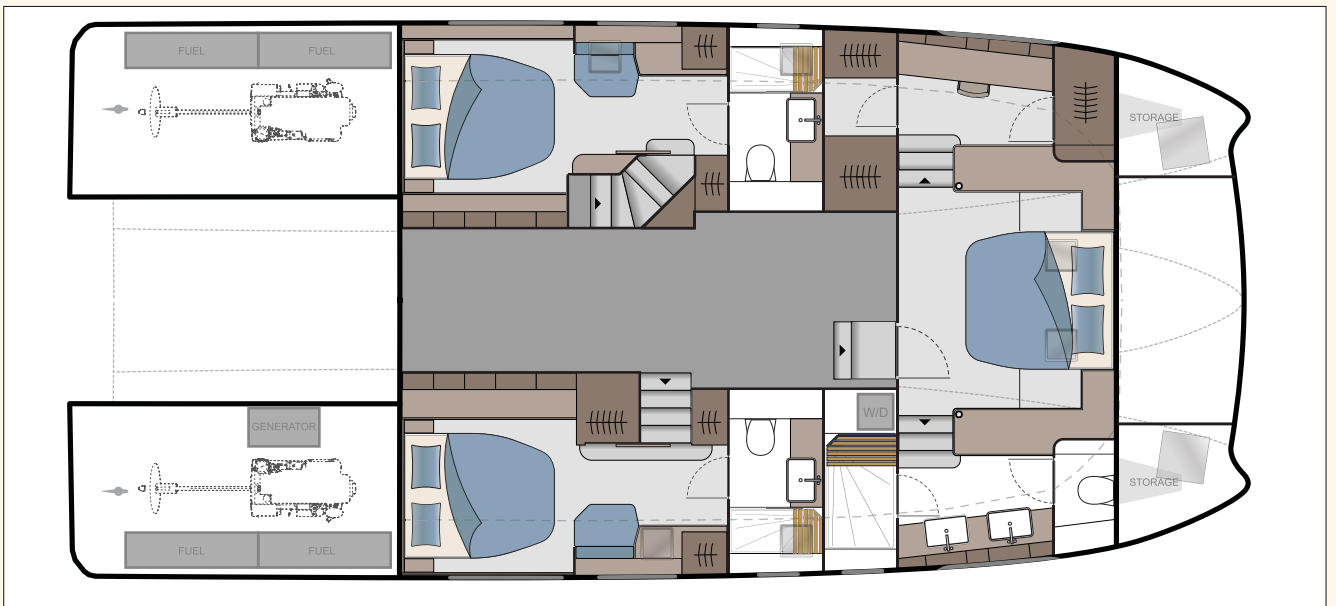




**Above:** Aquila 54 Flybridge GA



**Above:** Aquila 54 Main Deck (Std Layout) GA



**Above:** Aquila 54 lower deck, 3 cabin GA (Std Layout - 4 or 5 cab layouts available, too )